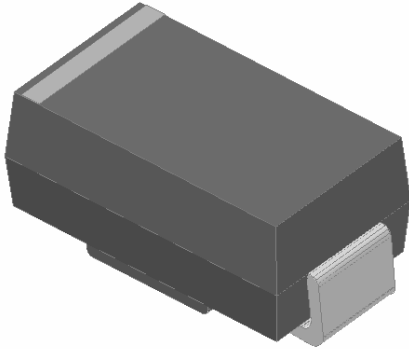


Surface Mount Zener Diodes

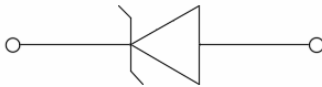


Features

- Low profile package
- Ideal for automated placement
- Glass passivated chip junction
- High forward surge capability
- Meets MSL level 1, per J-STD-020, LF maximum peak of 260 °C
- Part no. with suffix "Q" means AEC-Q101 qualified

Mechanical Data

- Package:** DO-214AC (SMA)
- Molding compound meets UL 94 V-0 flammability rating, RoHS-compliant, halogen-free
- Terminals:** Tin plated leads, solderable per J-STD-002 and JESD22-B102
- Polarity:** Cathode line denotes the cathode end



Maximum Ratings (T_a=25 °C Unless otherwise specified)

PARAMETER	P	T	1 +) °C
	D	W	2. °C
Maximum instantaneous forward voltage	F V	V	1. °C
Maximum junction temperature	^ T		-55 to +150
Storage temperature range	T _{stg}		-55 to +150

Thermal Characteristics T_a=25 °C Unless otherwise specified

PARAMETER	/W	^ Junction to ambient	12 °C

Note
Thermal resistance from junction to ambient and from junction to lead mounted on P.C.B. with 1.27 mm x 1.27 mm (0.050 in x 0.050 in) pads



SMA2Z6.8AQ THRU SMA2Z220AQ

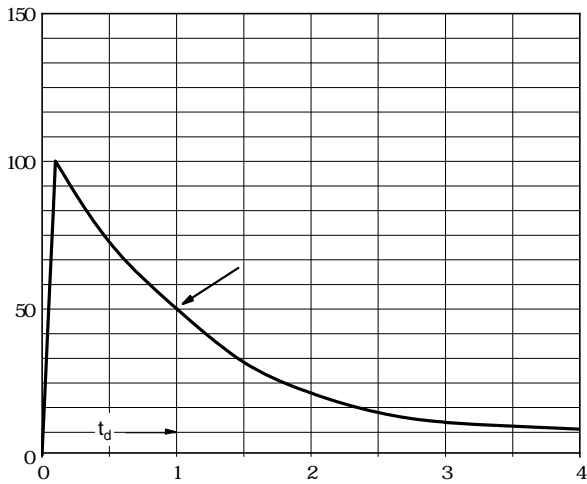
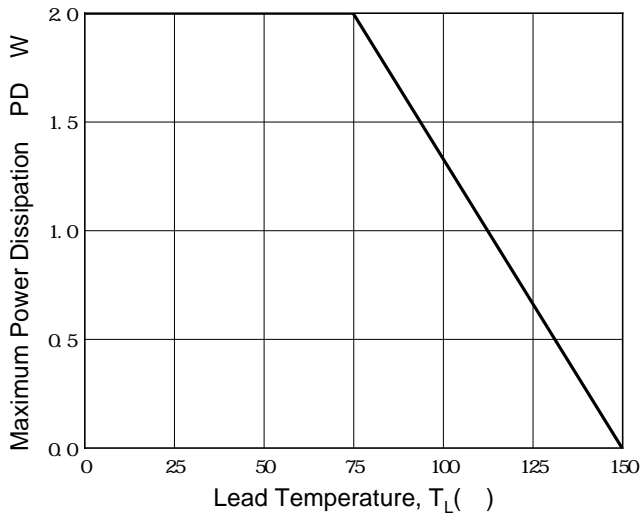
Electrical Characteristics $T_a=25$ Unless otherwise specified

Part Number	Nominal Zener voltage			Test current	Maximum dynamic impedance resistance			Maximum reverse leakage current		Maximum DC Zener Current
	Min VZ ⁽¹⁾ at IZT	Typ. VZ ⁽¹⁾ at IZT	Max VZ ⁽¹⁾ at IZT	IZT	ZZT at IZT	ZZK at IZK	IZK	IR	Test voltage VR	IZM
	V	V	V	mA			mA	μ A	V	mA
SMA2Z6.8AQ	6.46	6.8	7.14	73.5	2.0	700	1.00	10.0	4.0	266.0
SMA2Z7.5AQ	7.13	7.5	7.88	66.5	2.0	700	0.50	10.0	5.0	242.0
SMA2Z8.2AQ	7.79	8.2	8.61	61.0	2.3	700	0.50	10.0	6.0	220.0
SMA2Z9.1AQ	8.65	9.1	9.56	55.0	2.5	700	0.50	10.0	7.0	200.0
SMA2Z10AQ	9.50	10.0	10.50	50.0	3.5	700	0.25	10.0	7.6	182.0 SMA2Zm



Characteristics (Typical)

Fig1 Power Temperature Derating Curve



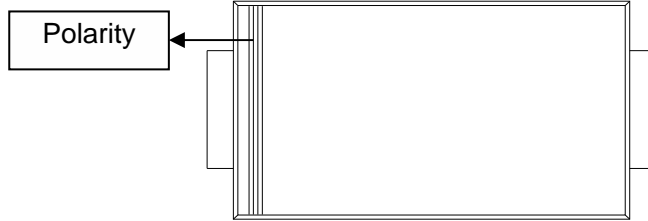


SMA2Z6.8AQ THRU SMA2Z220AQ

Ordering Information (Example)

PREFERRED P/N	PACKAGE CODE	UNIT WEIGHT(g)	MINIMUM PACKAGE(pcs)	OUTER CARTON QUANTITY(pcs)	DELIVERY MODE
SMA2Z6.8AQ~SMA2Z220AQ	F2	Approximate 0.067	7500	120000	13" reel

Marking Information



Note:
 1. All marking is at middle of the product body
 2. All marking is in laser printing

Outline Dimensions

DO-214AC(SMA)		
Dim	Min	Max
A	1.25	1.58
B	2.40	2.83
C	4.00	4.75
D	1.90	2.30
E	4.93	5.28
F	0.76	1.41
G	0.05	0.20
H	0.15	0.31
I	1.7	2.1

Suggested Pad Layout

DO-214AC(SMA)	
Dim	Millimeters
P1	4.00
P2	1.50
P3	6.50
Q1	2.50
Q2	1.70



Disclaimer

The information presented in this document is for reference only. Yangzhou Yangjie Electronic Technology Co., Ltd. reserves the right to make changes without notice for the specification of the products displayed herein to improve reliability, function or design or otherwise.

The product listed herein is designed to be used with automotive electronics, are not designed for use in medical, lifesaving, lifesustaining, or military, Yangjie or anyone on its behalf, assumes no responsibility or liability for any damages resulting from such improper use of sale.

This publication supersedes & replaces all information previously supplied. For additional information, please visit our website [http:// www.21yangjie.com](http://www.21yangjie.com) , or consult your nearest Yangjie's sales office for further assistance.

